

Consider Your Site – Function

Think like a pollinator

Planning your garden – think like a pollinator.

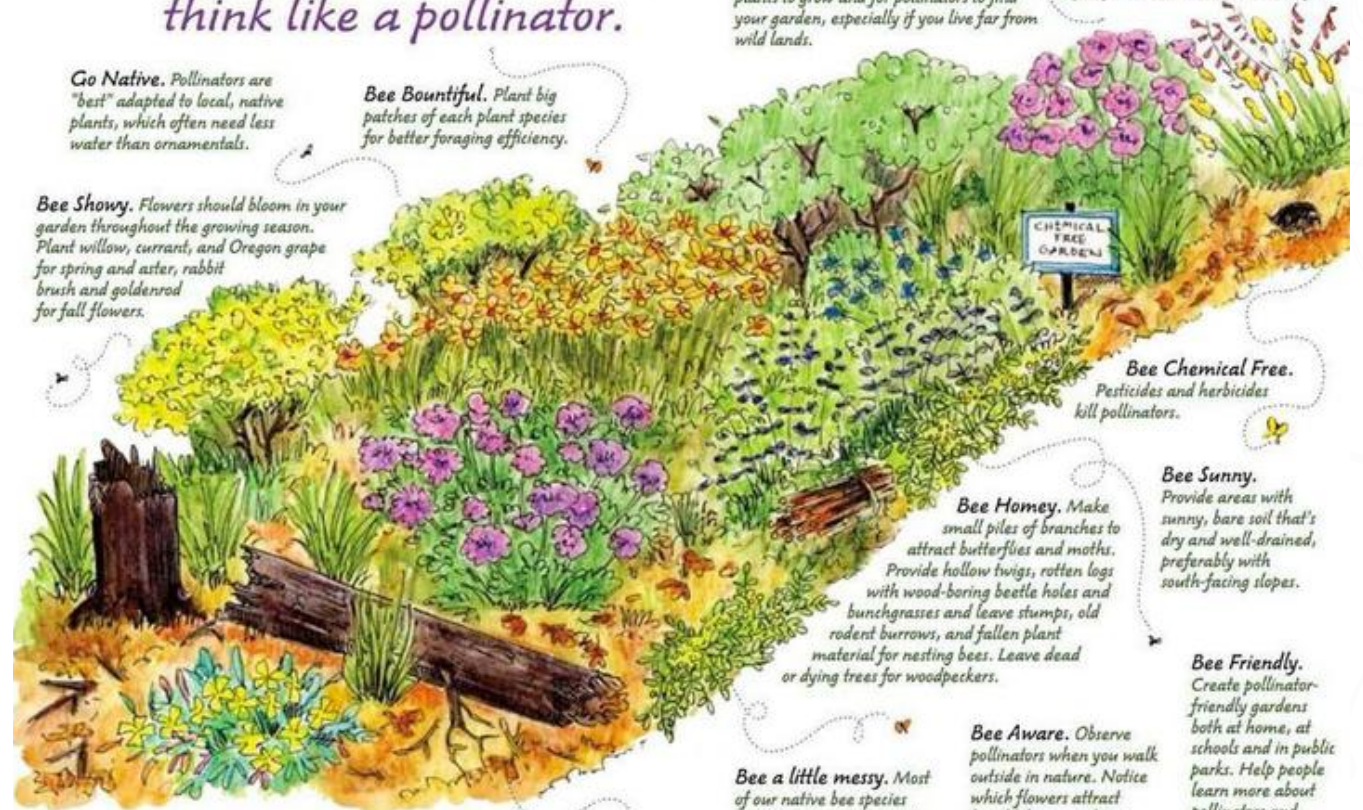
Go Native. Pollinators are "best" adapted to local, native plants, which often need less water than ornamentals.

Bee Bountiful. Plant big patches of each plant species for better foraging efficiency.

Bee Showy. Flowers should bloom in your garden throughout the growing season. Plant willow, currant, and Oregon grape for spring and aster, rabbit brush and goldenrod for fall flowers.

Bee Patient. It takes time for native plants to grow and for pollinators to find your garden, especially if you live far from wild lands.

Bee Gentle. Most bees will avoid stinging and use that behavior only in self-defense. Male bees do not sting.



Bee Chemical Free. Pesticides and herbicides kill pollinators.

Bee Sunny. Provide areas with sunny, bare soil that's dry and well-drained, preferably with south-facing slopes.

Bee Homey. Make small piles of branches to attract butterflies and moths. Provide hollow twigs, rotten logs with wood-boring beetle holes and bunchgrasses and leaf stumps, old rodent burrows, and fallen plant material for nesting bees. Leave dead or dying trees for woodpeckers.

Bee Friendly. Create pollinator-friendly gardens both at home, at schools and in public parks. Help people learn more about pollinators and native plants.

Bee a little messy. Most of our native bee species (70%) nest underground so avoid using weed cloth or heavy mulch.

Bee Aware. Observe pollinators when you walk outside in nature. Notice which flowers attract bumblebees or solitary bees, and which attract butterflies.

Bee Diverse. Plant a diversity of flowering species with abundant pollen and nectar and specific plants for feeding butterfly and moth caterpillars.

From the VIRGINIA WORKING LANDSCAPES. The artist is Nancy Seiler